

BioWin Network Installation

Introduction

This document outlines the procedures for installing the network version of BioWin. There are three parts to the network version installation:

1. The installation of the license management software HL-Server (see Install Hardlock Server Software).
2. The installation of the BioWin software on the client machine (see Install BioWin Software).
3. The configuration of the client machine (see Client Configuration).

Note : On most machines when the CD is inserted into the CD drive Windows automatically launches the standard BioWin installation program. To access the other installation programs on the CD you must terminate the installation and browse the CD using Windows Explorer.

Install Hardlock Server Software

BioWin network version accesses the Hardlock through the Hardlock server software. The server software must be loaded on a machine that is always available when any client wants to use the BioWin software. In most cases this will be a server on the network, but it is not required that this software be installed on a server. The machine that this software is installed on must have a USB port for the Hardlock.

You may use this option to install the Hardlock Server software on any Windows 2000/XP/2003/Vista based PC. This machine is referred to as the Hardlock Server – whether it is a server or not in any other sense does not matter.

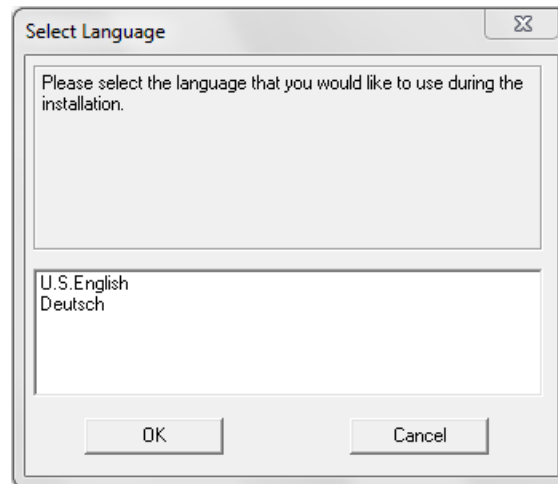
Note: The Hardlock Server must have a fixed IP address or resolvable domain name.

Step 1 – Begin HL Server Install

On the CD browse to the “\Network” folder and double click on **hlsw32.exe** to start the installation process.

Step 2 – Select Language

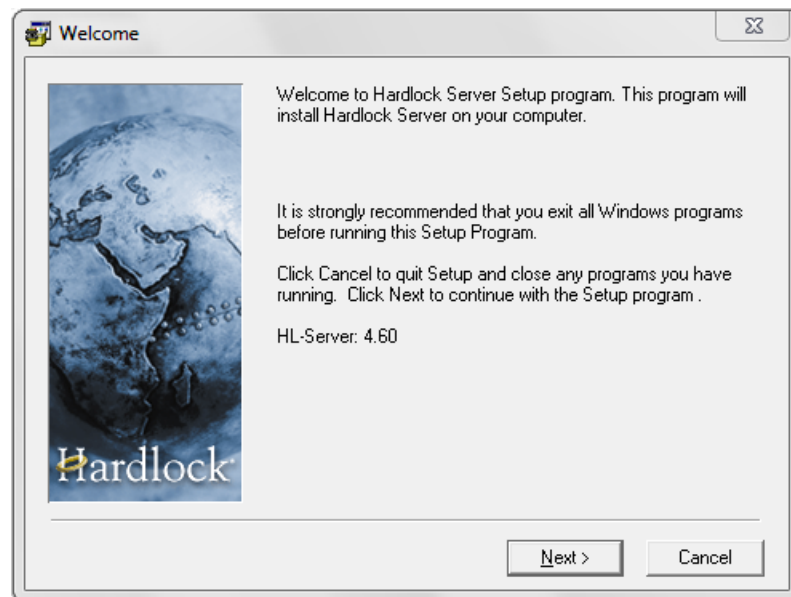
To install the Hardlock Device Drivers, first you need to highlight the language you would like to use during the installation, and click **OK**.



Selecting language for installation

Step 3 – Welcome Screen

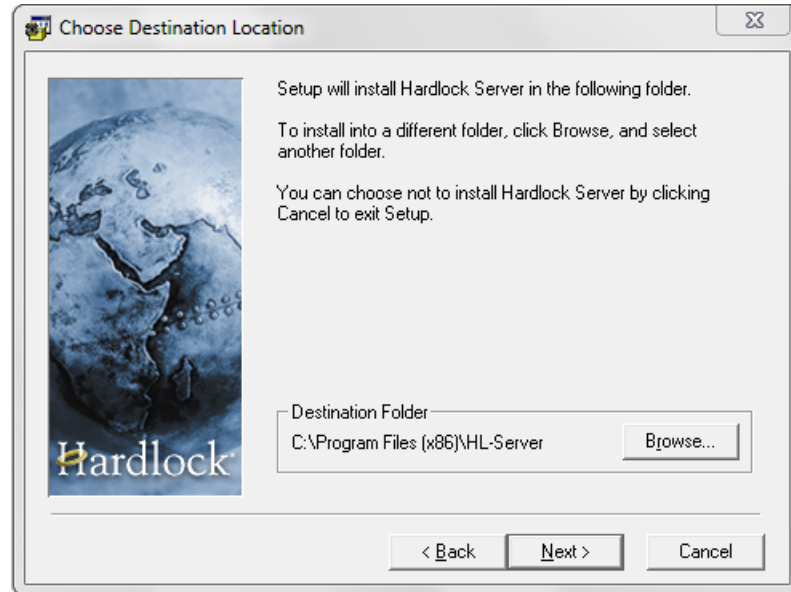
The next step displays a welcome screen. It is recommended that you exit all Windows programs before proceeding to the next step. From here, you begin the installation process by clicking the **Next** button. You may halt the Hardlock software installation process by clicking the **Cancel** button.



The Hardlock Server software welcome screen

Step 4 – Select a Destination Folder

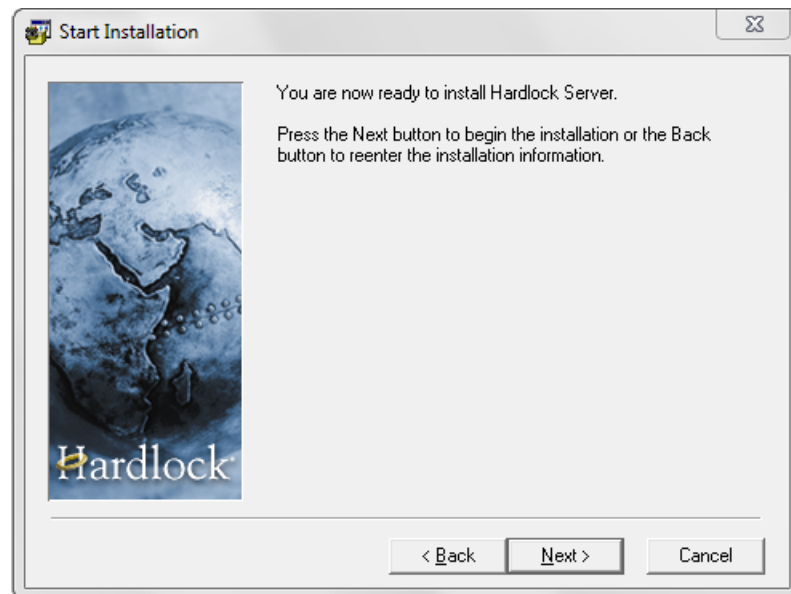
The next step is to choose where you would like to install the Hardlock Server software. If you want to install to a directory other than the default, choose an alternate directory by clicking the **Browse...** button. Once you are done, click **Next** to proceed.



Select a destination folder

Step 5 – Ready to Install

You are now ready to begin the installation of the Hardlock Server software based on the choices you have made. Click the **Next** button to begin. Once you begin, the install program will begin to copy files to your machine. A status bar will inform you of your progress.



You are ready to begin installing.

Step 6 – Install Hardlock Device Drivers

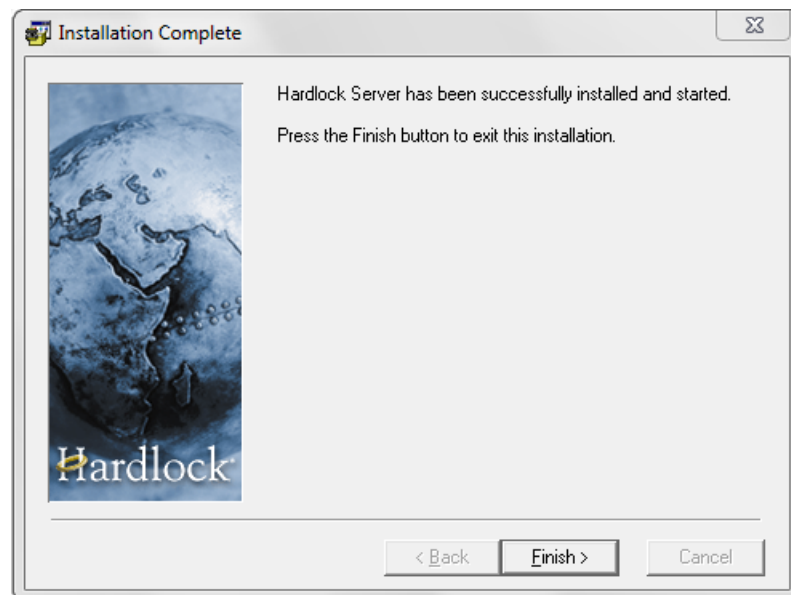
Click **Yes** to install the Hardlock Device Drivers.



Installing Hardlock Device Drivers

Step 7 – Finish Hardlock Server Software Installation

You have now successfully installed the Hardlock Server software on your machine. Click the **Finish** button to exit the Hardlock Server software installation program.



Finished the Hardlock server software installation

Install BioWin Software

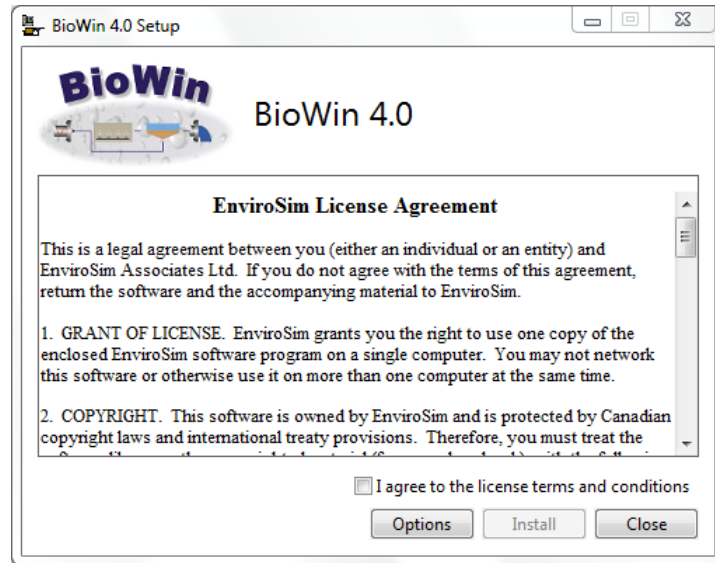
This procedure is used to install BioWin on any number of network clients.

Step 1 – Begin BioWin Install

Use the installation program that automatically launches when the CD is inserted into the drive. Alternatively, on the CD browse to the root folder and double click on **bw40setup.exe** to start the installation process.

Step 2 – Welcome

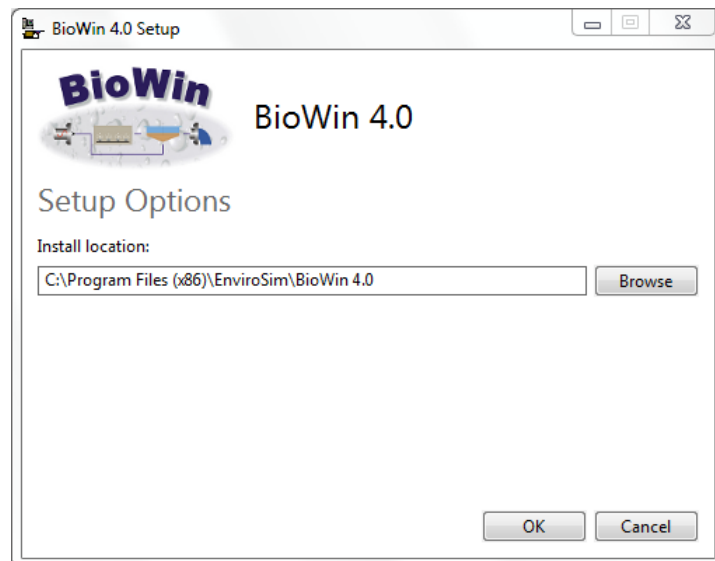
You are now about to begin the remainder of the BioWin software installation. If you wish to change the default installation location click the **Options** button. Otherwise proceed to **Step 4 – Software License Agreement**.



Welcome to the BioWin installation

Step 3 – Choose Destination Location

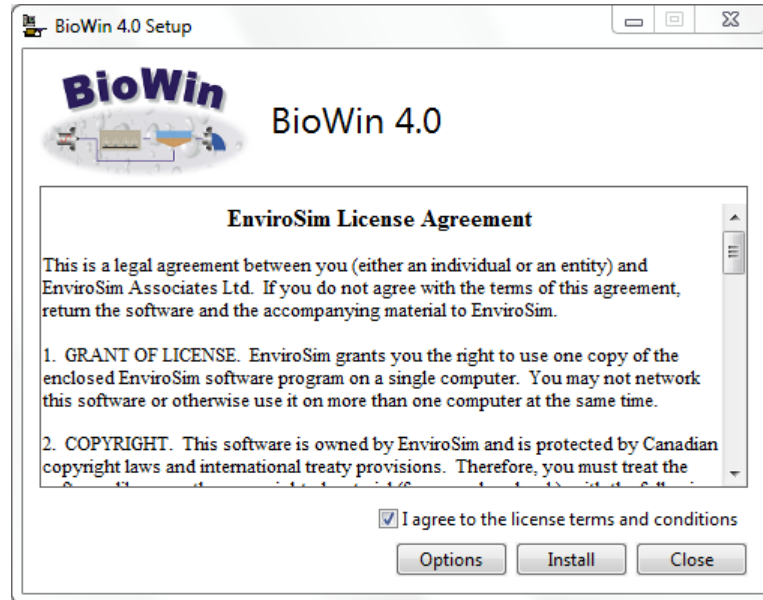
The next step is to choose where you would like to install the BioWin software. If you want to install to a directory other than the default, choose an alternate directory by clicking the **Browse** button. Once you are done, click **OK** to confirm.



Choose where you want to install BioWin on your computer

Step 4 – Software License Agreement

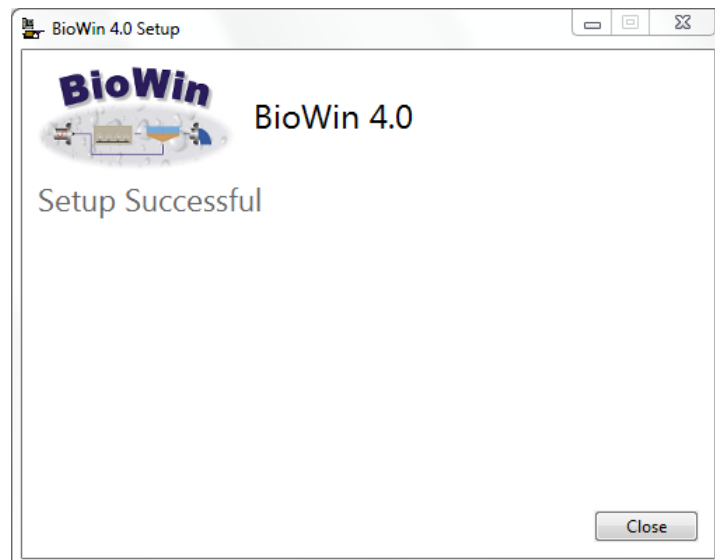
In order to proceed with the installation of BioWin, EnviroSim Associates Ltd. requires that you agree to our software license agreement. We urge you to read this material **carefully**. When you are ready to proceed with the installation, tick the checkbox to agree with the license agreement and click **Install** to proceed.



Accept the license agreement to continue the installation

Step 5 – Setup Complete

After a few minutes, BioWin will finish copying files to your computer and the setup process will be complete. When all the files have been copied to your computer, you will see the following screen.



You're finished!!

Click the **Close** button to complete the installation process.

Client Configuration

This procedure is used to configure a client to find the Hardlock Server. In order to direct the BioWin license check to the Hardlock Server, you must create an environment variable **HLS_IPADDR** on each client that BioWin is installed on. An example IP address is used in these instructions, but you should substitute your server's IP address.

Configuring Windows NT/2000/XP

1. Click **Start**, point to **Settings**, and then click **Control Panel**.
2. Double click **System**.
3. On the **Advanced** tab, click **Environment variables**.
4. Click **New** under "System Variables" ("User Variables" is also acceptable for that particular user)
5. Type in the following:
 - a. In the "Variable name" field: **HLS_IPADDR**
 - b. In the "Variable value" field: **192.168.0.10**
6. Accept **OK** from all open dialog boxes.

Configuring Windows Vista/7

1. Open the **Start** menu, right click on **Computer** and click **Properties**. Alternatively, in **Windows Explorer**, right click on **Computer** and click **Properties**.
2. Click **Advanced System Settings**.
3. Click **Environment variables**.
4. Click **New** under "System Variables" ("User Variables" is also acceptable for that particular user)
5. Type in the following:
 - a. In the "Variable name" field: **HLS_IPADDR**
 - b. In the "Variable value" field: **192.168.0.10**
6. Accept **OK** from all open dialog boxes.

Configuring Windows 8

1. Move the mouse to the upper-right corner of the desktop and click on **Settings** and then **PC info**.

2. Click **Advanced System Settings**.
3. Click **Environment variables**.
4. Click **New** under “System Variables” (“User Variables” is also acceptable for that particular user)
5. Type in the following:
 - a. In the “Variable name” field: `HLS_IPADDR`
 - b. In the “Variable value” field: `192.168.0.10`
6. Accept **OK** from all open dialog boxes.